

## Nurse Aide's Role

---

---

---

---

---

---

---

---

## Bleeding

- Don gloves, identify origin.
- Pt. Applies pressure if able or aide uses pad and applies direct continuous pressure.
- Call for help.
- Elevate wounded area IF?
- If ineffective, apply pressure over appropriate pulse point, maintaining pressure over wound, keep pt. warm.

---

---

---

---

---

---

---

---

## Shock signs and symptoms

- Skin pale, cold, and clammy (moist).
- Rapid, weak pulse >100
- Resp. shallow, irreg.
- Drop in blood pressure
- Nausea, anxiety, or thirst.
- May collapse or vomit.

---

---

---

---

---

---

---

---

## Common Causes of SHOCK



- Any severe injury      Severe pain
- cardiac arrest      Loss of body fluids.
- acute hemorrhage

---

---

---

---

---

---

---

---

## Nurse Aide's Role SHOCK

- Call for HELP, keep calm.
- Stay with resident.
- Keep person flat and quiet
- Cover and keep warm.
- Elevate legs above body, unless contraindicated by specific injury, (fractures)
- Continue to monitor V.S.



---

---

---

---

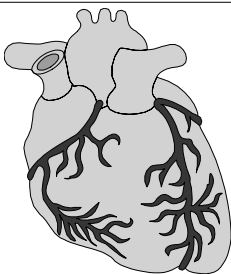
---

---

---

---

## Myocardial Infarction Those are at risk who



- smoke
- are overweight
- have atherosclerosis
- are immobile
- are older
- have diabetes
- have a history of heart disease in family

---

---

---

---

---


---

---

---

## Myocardial Infarction definition

- **A disruption of the flow of blood to an area of the muscle of the heart with subsequent death of the tissue at that area.**



- **Can be a minor, moderate, or severe heart attack depending on how much heart muscle dies.**

---

---

---

---

---

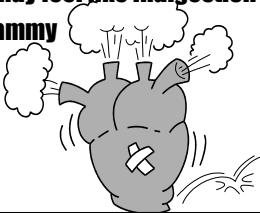
---

---

---

## Signs and Symptoms of M.I.

- **Crushing pain that can radiate up jaw or down arm.**
- **Heaviness in chest, may feel like indigestion**
- **Diaphoresis, cold clammy**
- **Pale to grayish color**
- **Difficulty breathing**
- **Unconsciousness**
- **Irregular pulse**



---

---

---

---


---

---

---

---

## Nurse Aide's role during an M.I.



<b>Get help</b>	<b>Monitor Vital Signs</b>
<b>Remain Calm</b>	<b>Provide Oxygen</b>
<b>Stay with resident</b>	<b>Keep resident warm</b>
<b>Fowler's Position</b>	<b>Be aware of advance directives</b>
<b>Reassure Resident</b>	<b>Initiate CPR if indicated</b>

---

---

---

---

---

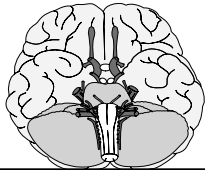
---

---

---

## Brain Attack definition

- A stroke, cerebral vascular accident, or CVA occurs when there is a disturbance or obstruction of the flow of blood to a particular area of the brain with subsequent death of tissue.



---

---

---

---

---

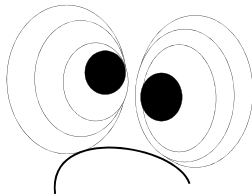
---

---

---

## Signs and Symptoms of CVA Severe Attack

- Seizure activity
- Loss of consciousness
- Difficulty breathing
- Hemiplegia
- Has unequal pupils



---

---

---

---

---

---

---

---

## S/S of a less severe CVA

- Disorientation
- Headache/Dizziness
- Slurred Speech
- Memory Loss
- Weakness



---

---

---

---

---


---

---

---

## Nurse Aide's Role /CVA

- Reassure patient, remain with them.
- Keep calm
- Call for help
- Position on side
- Maintain an airway
- Monitor V/S
- Keep patient warm




---

---

---

---

---

---


---

---

## Fainting/Syncope

When blood supply to brain is reduced briefly

- Signs and Symptoms
- 1) Pallor/paleness
- 2) Cool/moist skin
- 3) Eyes may roll back
- 4) lightheadedness
- 5) dizziness
- 6) unsteadiness




---

---

---

---


---

---

---

---

## Action of Nurse Aide (Fainting)



- Sit pt. down if chair handy
- Head between knees.
- Ease to floor if falling
- Remain calm, call for help
- Loosen tight clothing
- Raise legs above heart if lying down.
- Monitor V/S
- Let them rest for 10 min.

---

---

---

---

---

---

---

---