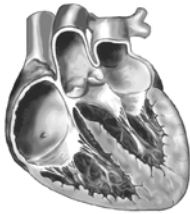


Pacemaker Rhythms

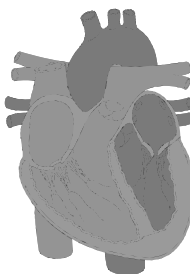
An artificial pulse generator that delivers an electrical current to the heart to stimulate depolarization

Atrial Pacemaker



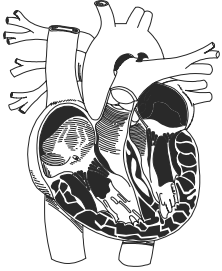
- Pacing electrode is in the right atrium.
- Stimulation of the atria produces a pacemaker spike on the ECG.
- A P wave follows.
- Used when SA node is diseased
- Conduction through AV junction must be normal.
- Can't pace the ventricles.

Ventricular Pacemaker



- Pacing electrode placed in the right ventricle.
- Stimulation of the ventricles produces a pacemaker spike on the ECG.
- A wide QRS follows.
- If spontaneous ventricular depolarization doesn't occur within preset interval, the pacemaker fires.

AV Sequential Pacemaker



- A pacemaker that paces both the atrium and ventricle.
- One lead placed in R atrium, one in R ventricle.
